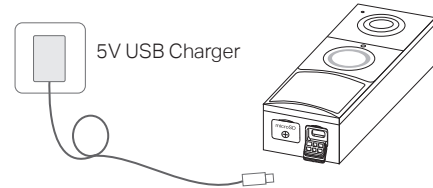


01 / Charge Doorbell Before Use

Plug in the USB cable to charge your doorbell. When you plug in the charger, the LED should blink amber quickly for 3 seconds.



Note:

1. Charge the doorbell before use. This will take about 7 hours.
2. The USB charger is not provided.
3. Peel off film from the doorbell before use.
4. Warning: Do not tear off the silicone part by force as it may affect the waterproof performance.
5. Keep the ports firmly covered when not in use to ensure waterproof performance.
6. The doorbell may not power up after falling. Plug in the USB charger to power it on again.

Quick Start Guide

Video Doorbell Camera

Setup Video

Scan QR code or visit <https://www.tp-link.com/support/setup-video/#cloud-cameras>



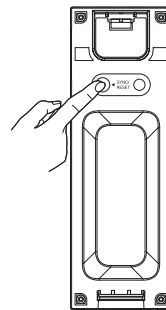
7106511353 REV1.0.2 *Images may differ from your actual product.

02 / Set Up the Smart Doorbell & Pair with the Chime

1. Get the Tapo app from the App Store or Google Play.

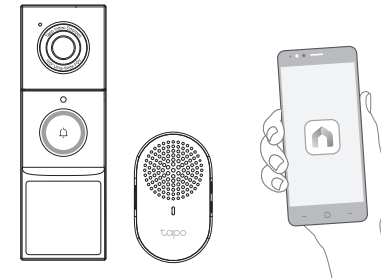


2. Press the SYNC/RESET button on the back of the doorbell for 3 seconds to power on the doorbell.



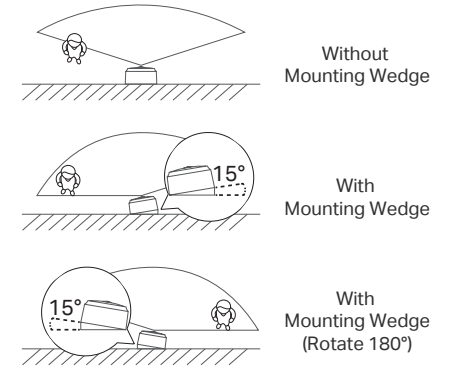
3. Follow the instructions on the Tapo app to set up your doorbell and pair with the chime.

If you didn't pair the chime during the doorbell setup, you can pair it later. For details, visit <https://www.tp-link.com/support/faq/3818/>.



03 / Installation Tips

1. Install the doorbell on a flat and clean wall.
2. The doorbell should be placed 1.2 m (4 ft) above the ground.
3. Use the included 15° mounting wedge for a more focused view from a specific side.



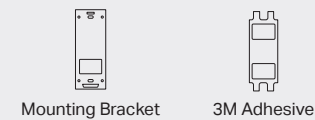
4. Avoid placing the doorbell close to a side wall in the field of view. If you must, use the mounting wedge to adjust the viewing angle to reduce reflected light from the wall for better night vision performance.

04 / Install the Doorbell

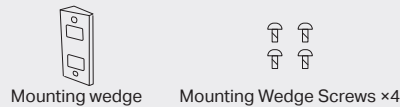
*Preview video on the Tapo app to find the desired installation location.

Option 1. Stick to a smooth wall

Required Accessories:



Optional

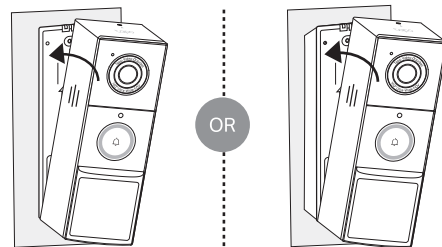
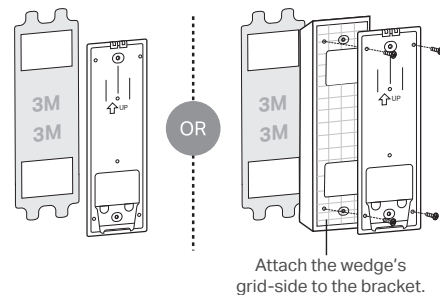


1. Attach the included **adhesive** to the back of the **bracket or wedge**. If you use the wedge to adjust angle, first affix the bracket and the wedge with the **mounting wedge screws**.

Note: The adhesive is for one-time use. Avoid re-using the adhesive to ensure its adhesion.

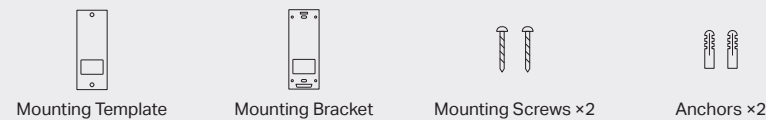
2. Wipe off the dust from the surface, stick the **bracket or wedge** with adhesive to a clean wall, and press it down for 15 seconds to ensure the bracket is firmly attached. Then starting from the bottom, attach the doorbell to the bracket.

Note: This is applicable with tile, glass, marble, metal, stainless steel, and smooth wall surfaces.

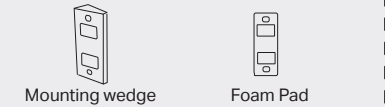


Option 2. Mount to the wall

Required Accessories:

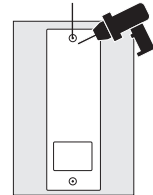


Optional



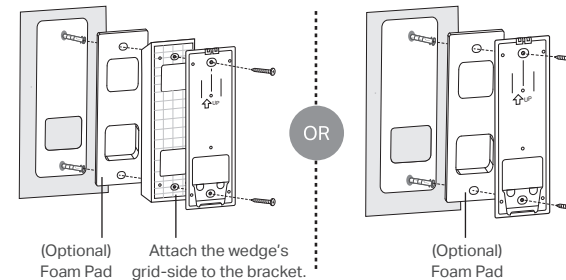
1. Stick the **mounting template** to the desired mounting place. Drill two holes according to the template.

Φ=6 mm (15/64 in.)



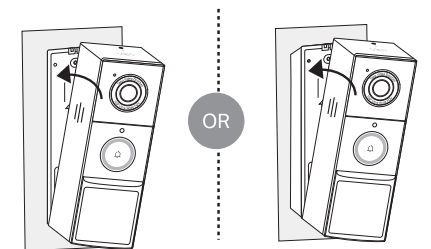
2. Insert two **anchors** into the holes. Use the **mounting screws** to affix the bracket (or wedge with bracket if you use the wedge to adjust angle) over the anchors.

Note: When mounting to uneven walls, stick the **foam pad** on the back of the wedge.



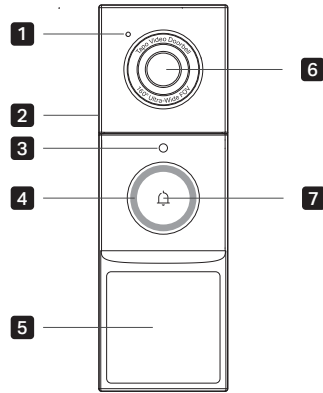
3. Starting from the bottom, attach the doorbell to the bracket.

Note: If you have trouble attaching the doorbell or it causes false anti-theft alarms, check if you overtightened the screws that the bracket bent. Adjust the depth of the screw and reinstall the doorbell.



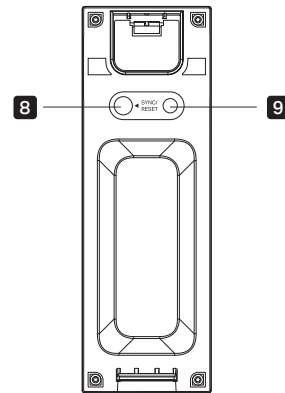
Doorbell Appearance

Front



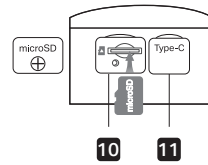
- 1** Microphone
- 2** Speaker
- 3** Light Sensor
- 4** LED
- 5** Motion Sensor (PIR)
- 6** Lens
- 7** Ring Button

Back



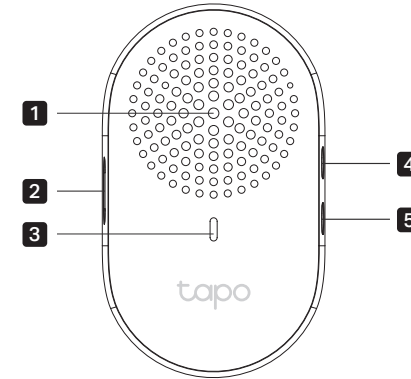
- 8** SYNC/RESET Button
Press and hold for about 3s: Power on the doorbell
Press and hold for about 5s: Reset the doorbell
- 9** Anti-Theft Button
When the Anti-Theft Alarm is enabled on the Tapo app, an alarm will trigger once the doorbell is removed.
 - Press and hold for 5s: Pause the alarm (Continues to alarm when released)
 - Press and hold buttons **8** + **9** simultaneously for 10s: Disable the anti-theft alarm feature

Bottom



- 10** microSD Card Slot
Loosen the screws and remove the cover manually. The cover is designed so the screws can be loosened, but not fully removed. Insert a microSD card. Initialize it on the Tapo app for local recording.
*microSD card not included
- 11** Type-C Port
Plug in the USB cable to charge your doorbell.

Chime Appearance



- 1** Speaker
- 2** Reset Button
• Press and hold for 5s: Reset Wi-Fi settings
• Press and hold for 10s: Reset to factory settings
- 3** LED
- 4** Volume Button
Press to adjust the volume of the ring.
- 5** Music Button
Press to cycle through different ringtones.

Doorbell LED Indication

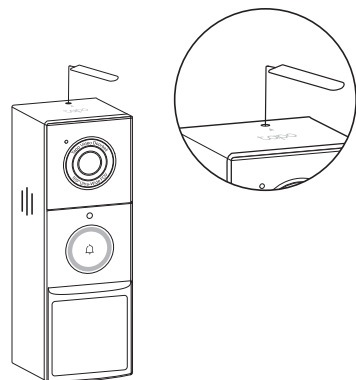
Solid red	Starting up
Blinking red and green	Ready for setup
Blinking red slowly	Connecting to Wi-Fi
Solid amber	Connected to Wi-Fi
Solid white	Connected to the cloud
Blinking red quickly	Doorbell resetting
Blinking white quickly	Doorbell updating
Blinking amber quickly for 3 seconds	Charging the doorbell

Chime LED Indication

Solid red	Starting up
Blinking red and green	Ready for setup
Blinking red slowly	Connecting to Wi-Fi
Solid amber	Connected to Wi-Fi
Solid green	Connected to the cloud
Blinking green quickly	Chime updating

How to Detach Doorbell from the Wall

Use a pin to detach the doorbell from the bracket.



Safety Information

- Do not use damaged charger or USB cable to charge the device.
- Do not use any other chargers than those recommended.
- Do not use the device where wireless devices are not allowed.
- Adapter shall be easily accessible.
- Use only power supplies which are provided by manufacturer and in the original packing of this product. If you have any questions, please don't hesitate to contact us.
- Keep the device away from fire or hot environments. DO NOT immerse in water or any other liquid.
- Do not disassemble, repair or modify the product.
- Do not place near automatically controlled devices such as fire alarms. Radio waves emitted from this product may cause such devices to malfunction resulting in an accident.
- Observe restrictions on using wireless products in fuel depots, chemical plants or when blasting operations are in progress.
- Do not use liquid to clean the product. Only use a dry cloth.
- Never put metal objects inside the product. If a metal object enters the product turn off the circuit breaker and contact an authorised electrician.
- This product is not intended to be used when providing medical care. Consult the manufacturer of any personal medical devices, such as pacemakers or hearing aids to determine if they are adequately shielded from external RF (radio frequency) energy.
- Do not use this product in health care facilities. Hospitals or health care facilities may be using equipment that could be sensitive to external RF energy.
- Do not place heavy objects on top of the product.
- When you leave the product unused for a long time unplug the product from the power outlet.

- This product may interfere with other electronic products such as TV, radios, personal computers, phones or other wireless devices.
- Always follow the local waste and recycle laws when you get rid of the used battery.
- Do not use the product if the casing has been broken. Danger of electric shock.
- Never touch the product with wet hands.
- The mounting height should not be higher than 2 meters.
- Doorbell Operating Temperature: -20 °C ~ 45 °C (-4 °F ~ 113 °F)
- Chime Operating Temperature: 0 °C ~ 40 °C (32 °F ~ 104 °F)

CAUTION!

Avoid replacement of a battery with an incorrect type that can defeat a safeguard.

Avoid disposal of a battery into fire or a hot oven, or mechanically crushing or cutting of a battery, that can result in an explosion.

Do not leave a battery in an extremely high temperature surrounding environment that can result in an explosion or the leakage of flammable liquid or gas; Do not leave a battery subjected to extremely low air pressure that may result in an explosion or the leakage of flammable liquid or gas.

Please read and follow the above safety information when operating the device. We cannot guarantee that no accidents or damage will occur due to improper use of the device. Please use this product with care and operate at your own risk.



TP-Link hereby declares that the device is in compliance with the essential requirements and other relevant provisions of directives 2014/53/EU, 2009/125/EC, 2011/65/EU and (EU)2015/863.

The original EU declaration of conformity may be found at <https://www.tapo.com/support/ce/>

TP-Link hereby declares that the device is in compliance with the essential requirements and other relevant provisions of the Radio Equipment Regulations 2017.

The original UK declaration of conformity may be found at <https://www.tapo.com/support/ukca/>



Need some help?

Visit <https://www.tapo.com/support/> for technical support, the user guide, FAQs, warranty & more

